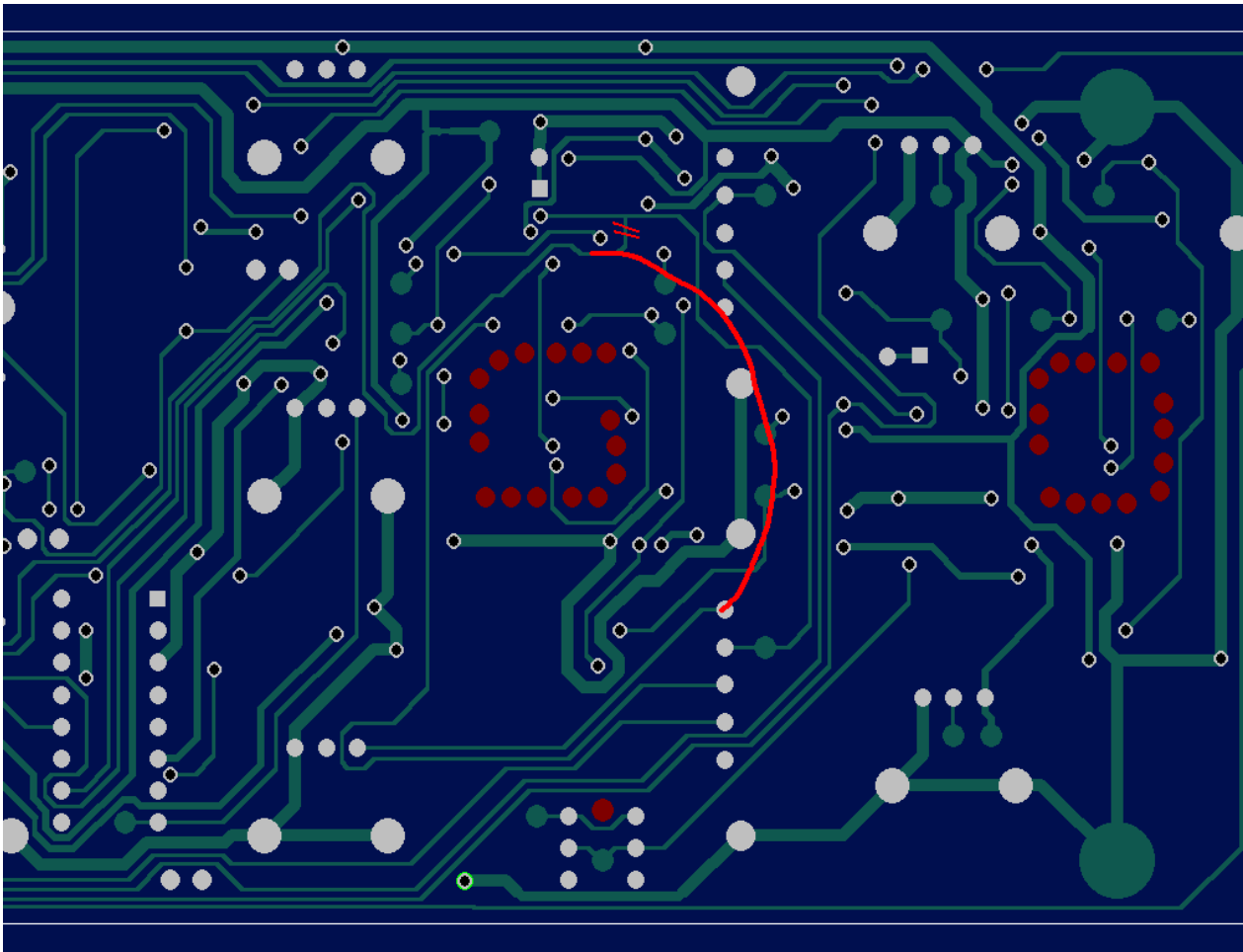


Correction of OSC2 to OSC3 signal flow

From serial 50100 to 50150 there is the following mistake in the Neptune II. Signal source for OSC3 in switch position "VCO 2" can only be the saw wave of OSC2 but it should be selectable of pulse, saw or external input.

It is needed to cut the track in the picture below on the backside of the pcb and to scratch soldermaskfree a short part of the remaining track and to add a wire like shown in this picture:



Spectral Audio
Stockerstrasse 1
CH-6344 Meierskappel

info@spectralaudio.ch



After this, it could look like this (note this pcb is not assebled):

